

Tools for: Healthy People – Safe Roads – Vibrant Economy

Transportation and Health Tool: A New Tool to Drive Policy Decisions

New Partners for Smart Growth Conference

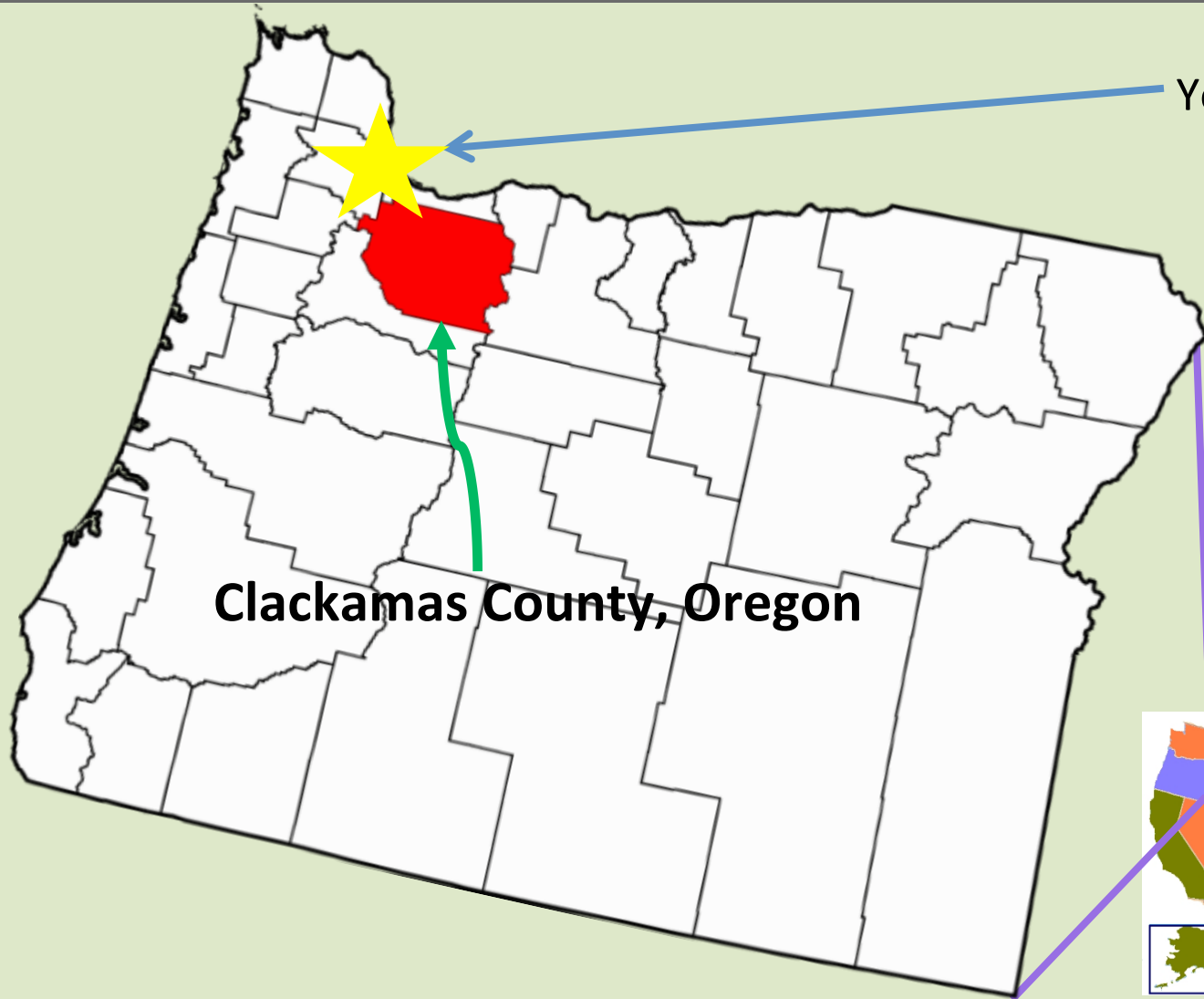
Joseph F. Marek, PE, PTOE
Traffic Engineer, Director
Clackamas Safe Communities

Philip Mason, MPH
Senior Policy Analyst
Public Health Division

Clackamas County, Oregon

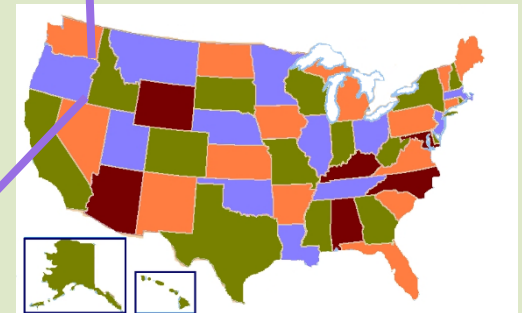
February 11, 2016





You are Here

Clackamas County, Oregon



Clackamas County, Oregon

- ✓ 1839 sq. miles/385,000 people
- ✓ 1,400 miles of County maintained roads
- ✓ Over 2,200 total miles
- ✓ 17 cities
- ✓ Summit of Cascade Mountains to fertile Willamette Valley



Crashes In Clackamas County

- ❑ Each Year - All Roads
 - ❑ 26 deaths average
 - ❑ 128 serious injury crashes
- ❑ One **death** every **13 days**
- ❑ One **serious injury** every **3 days**



Top Health Indicator's

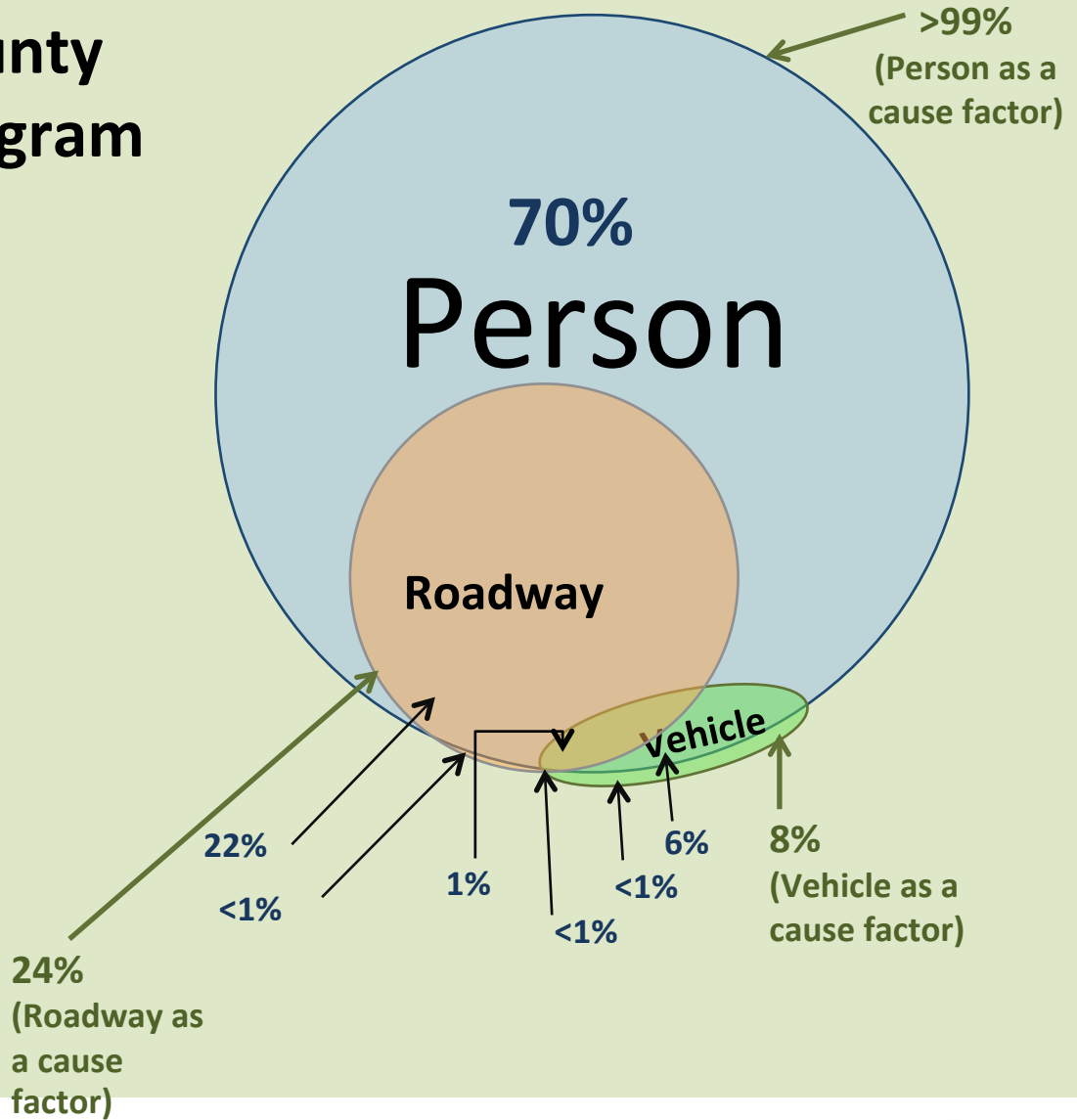
- Reduce
 - Non-transport deaths
 - Incidence of Chlamydia
 - Number of suicide deaths
 - Incidence of cancer
 - Heart disease deaths
 - Drug-related deaths



Clackamas County Crash Cause Diagram

Crash Cause Factor	%
Person	>99
Roadway	24
Vehicle	8
Sole Crash Cause Factor	%
Person	70
Roadway	<1
Vehicle	<1
Combination Crash Cause Factors	%
Person & Roadway	22
Person & Vehicle	6
Roadway & Vehicle	<1
Roadway & Vehicle & Person	1

Source: Oregon DOT crash data, 2009-2013



Organizational Elements

- At some point – need transportation and health professionals talking to each other



Organizational Structure

County Commissioners

Engineering/
Planning

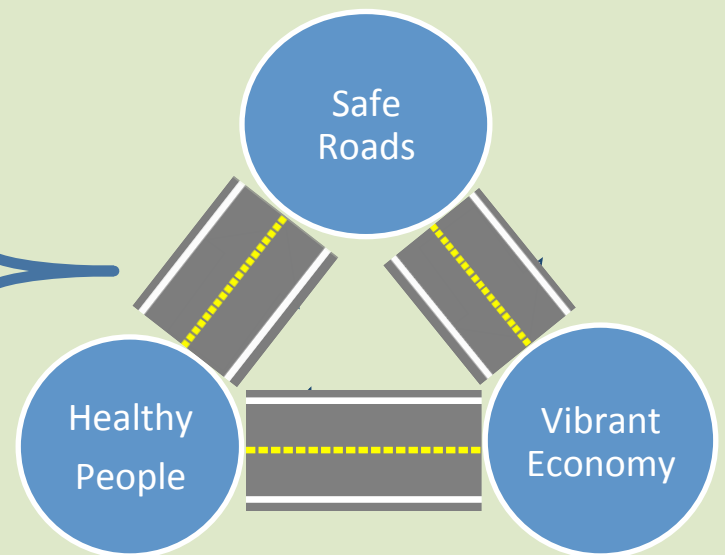
Health,
Housing,
Human
Services

Law
Enforcement



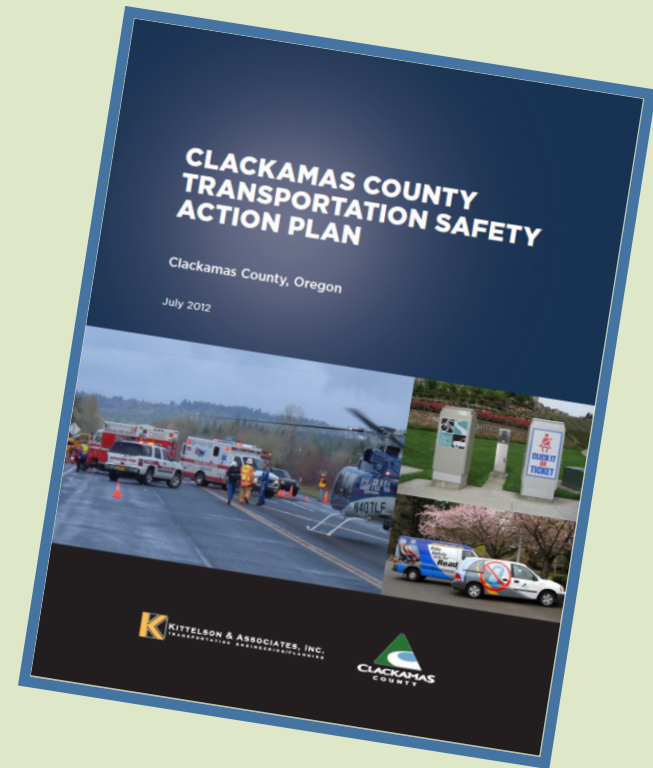
County Strategic Priorities

- Build public trust through good government
- Grow a vibrant economy
- Build a strong infrastructure
- Ensure safe, healthy and secure communities
- Honor, utilize, promote and invest in our natural resources



Only County in US with locally adopted *Transportation Safety Action Plan*

- Adopted in late 2012
- Safety focus
- Broad Approach
- Culture change!



Transportation System Plan

- **Goal 4:** *Promote a transportation system that maintains or improves our safety, health, and security*
- Had County Health Officer on project team

Clackamas County Comprehensive Plan

Chapter 5: TRANSPORTATION SYSTEM PLAN

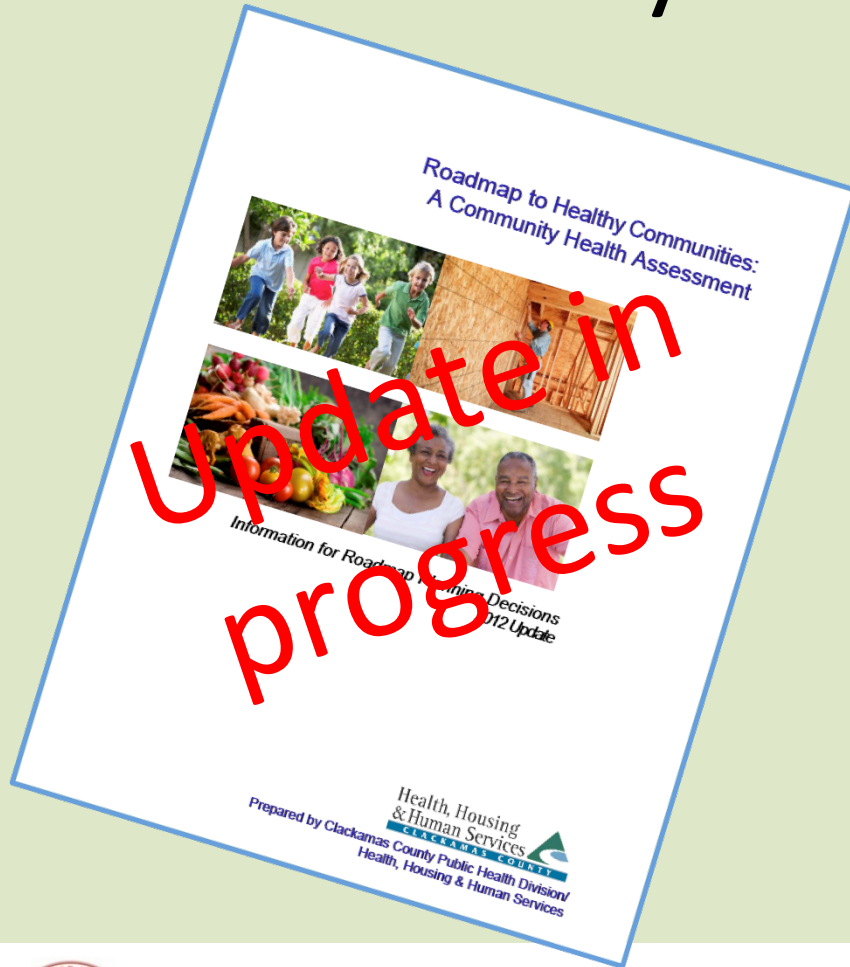
The Clackamas County Transportation System Plan (TSP) will guide transportation related decisions and identify the transportation needs and priorities in unincorporated Clackamas County from 2013 to 2033. The TSP has been created in coordination with the County's 16 cities, the State of Oregon, area transit providers, and other affected agencies and has been vetted through an extensive public process, including a series of public outreach events and twelve Public Advisory Committee meetings. The public and county staff worked together to develop the following vision for the TSP and six goals to guide implementation of this vision:

Building on the foundation of our existing assets, we envision a well-maintained and designed transportation system that provides safety, flexibility, mobility, accessibility and connectivity for people, goods and services; is tailored to our diverse geographies; and supports future needs and land use plans.

TSP GOALS



Community Health Assessment

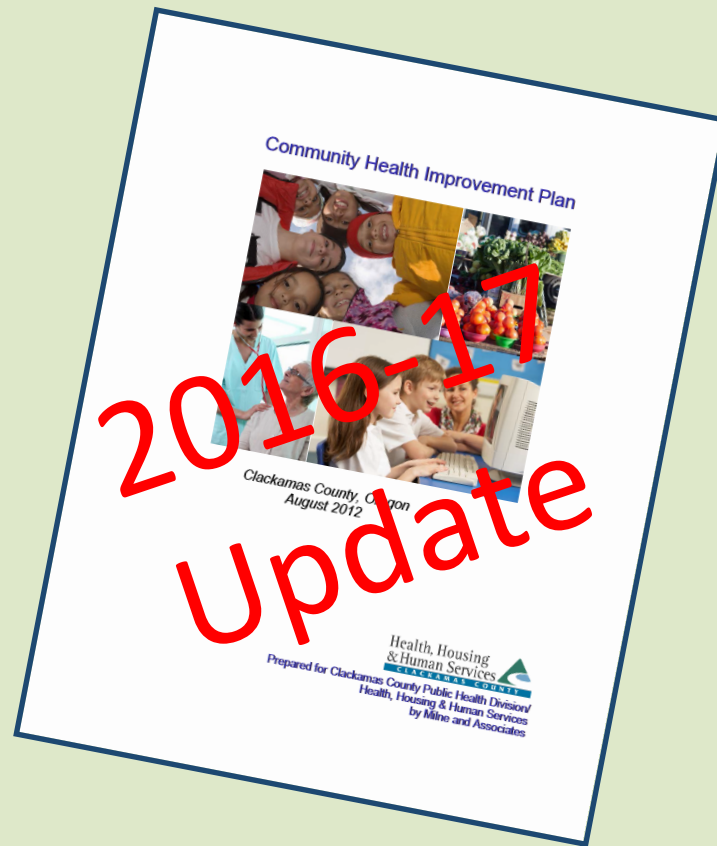


- Update in progress
- Better understand how transportation fits in with
 - Community health
 - Sense of community

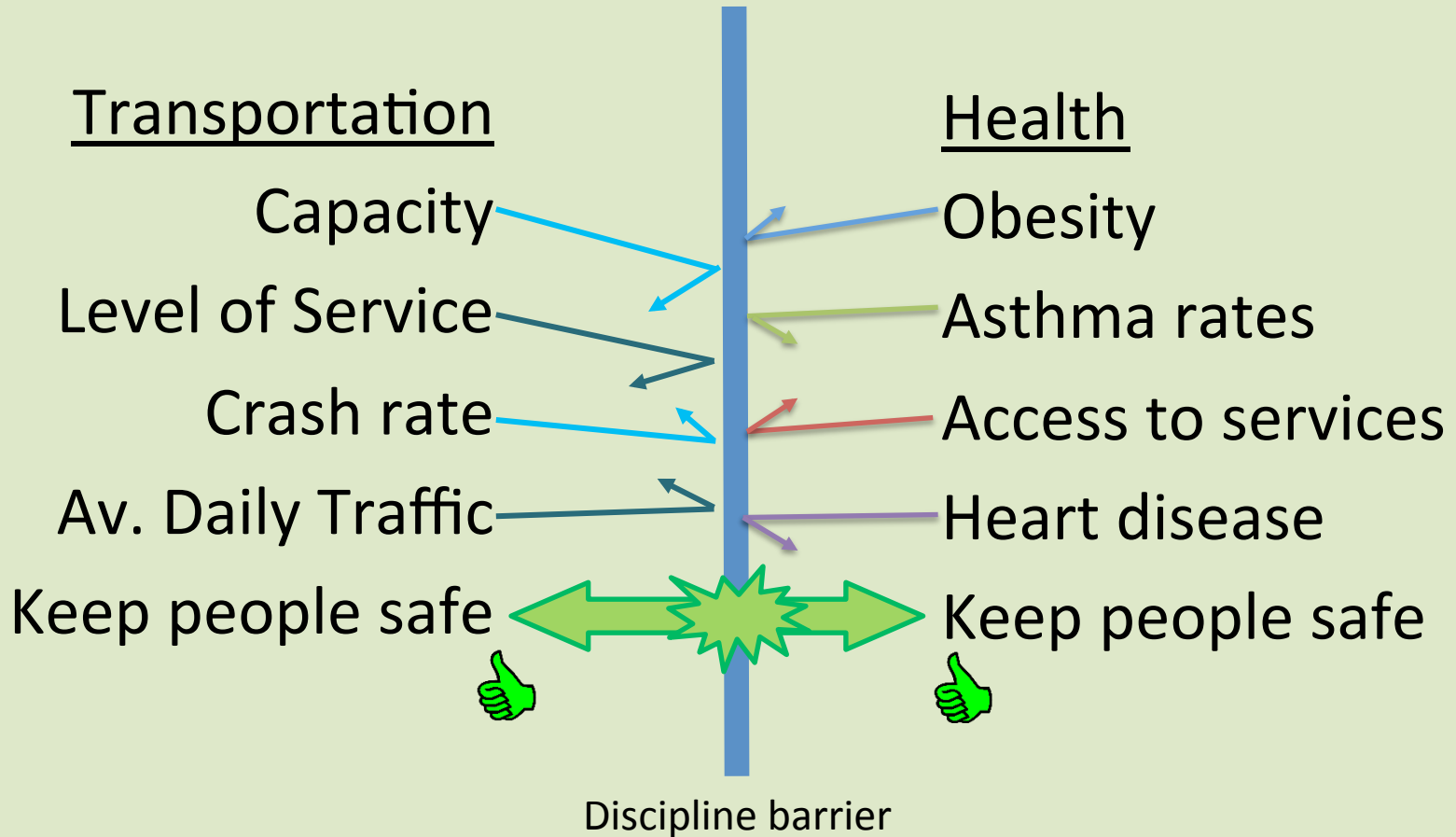


Community Health Improvement Plan Priorities

- *Decrease*
 - Obesity
 - Youth tobacco use
 - Falls – older adults
 - Prescription drug Misuse
- *Increase*
 - Breastfeeding

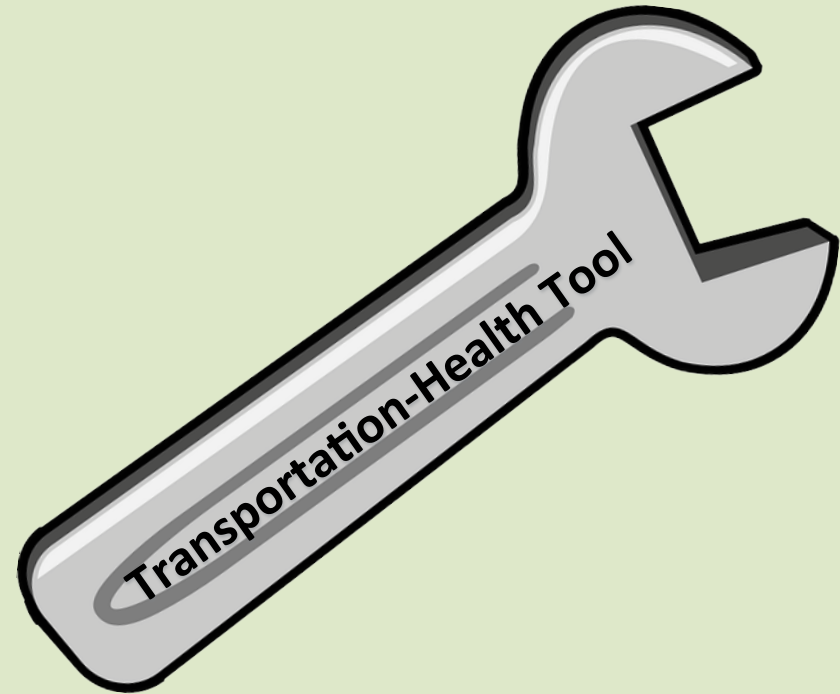


Two Worlds Combine!



And ... Out of the Toolbox!

- A new way to help us improve our communities!



14 Key Indicators

Transportation

1. Commute Mode Share
2. Housing and Transportation Affordability
3. Land Use Mix
4. Person Miles Traveled by Mode
5. Proximity to Major Roadways
6. Public Transportation Trips per Capita
7. VMT Per Capita

Health

8. Alcohol-Impaired Fatalities
9. Physical Activity from Transportation
10. Road Traffic Fatalities by Mode
11. Road Traffic Fatalities Exposure Rate

Policy

12. Complete Streets Policies
13. Seat Belt Use
14. Use of Federal Funds for Bicycle and Pedestrian Efforts



Lessons from Road Safety Audit – Health Impact Assessment

Home

Proximity To Major Roadways

Indicator Description

Proximity to major roadways estimates the percentage of people who live within 200 meters, or approximately 650 feet, of a high traffic roadway that carries over 125,000 vehicles per day. Data on the location of roads and traffic levels come from the 2011 National Transportation Atlas Database; data on population come from the 2010 Census.

Transportation and Health Connection

According to CDC, more than 11 million people in the United States live within 150 meters (or approximately 500 feet) from a major highway (Boehmer et al., 2013). The vehicle traffic on these roadways is a major



Click and Learn!

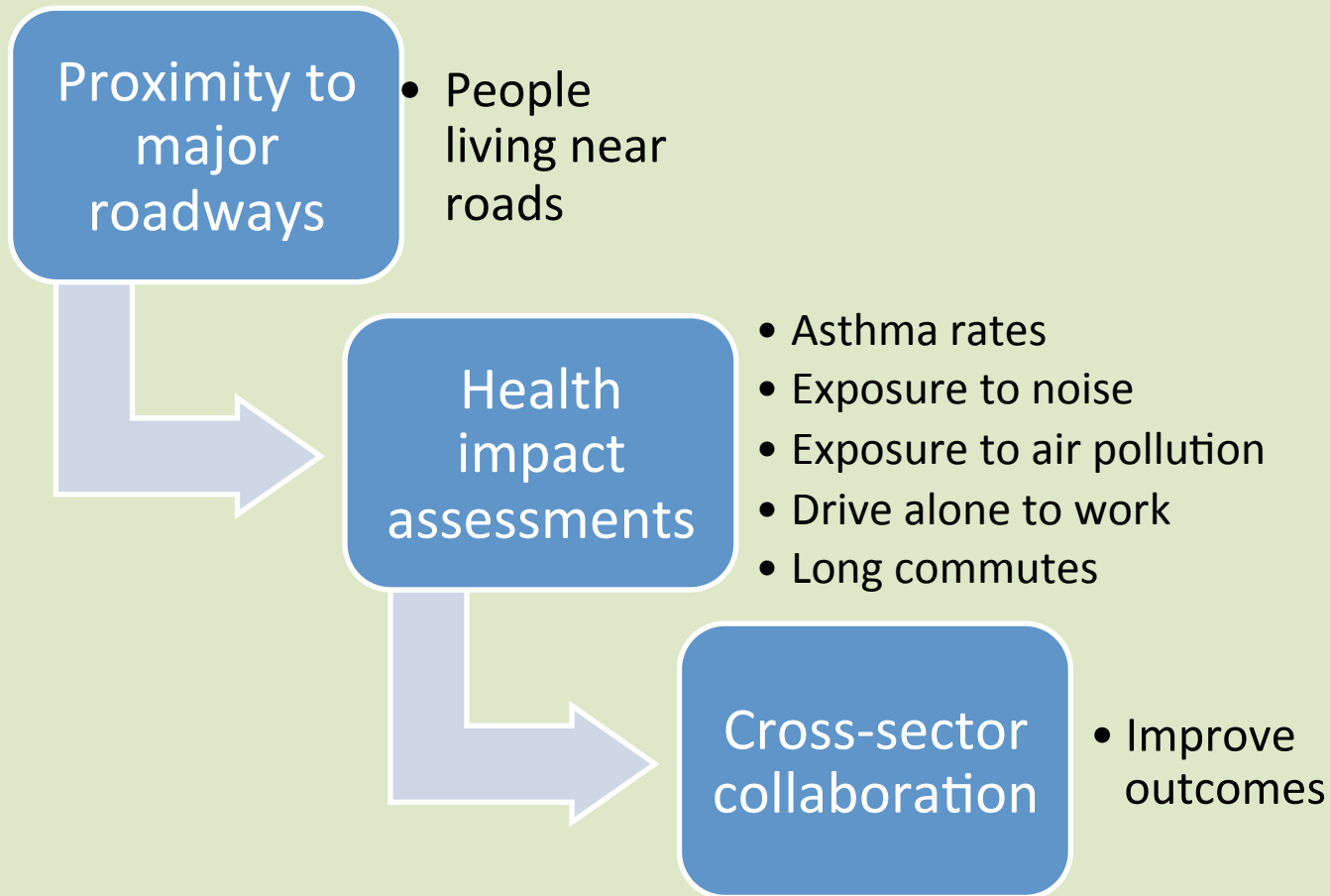
Proximity to major roadways

Related Strategies

- Clean freight
- Complete Streets
- Expand bicycle and pedestrian infrastructure
- Health impact assessment (HIA)
- Health performance metrics
- Improve vehicles and fuels
- Integrate health and transportation planning



Look More at ...



Guide us to Solutions

- Encouragement and access to transit
- Good tree canopy for air purification
- Planning and zoning considerations
- Sidewalks – places to exercise



How the THT Tool Helps

For the Engineer

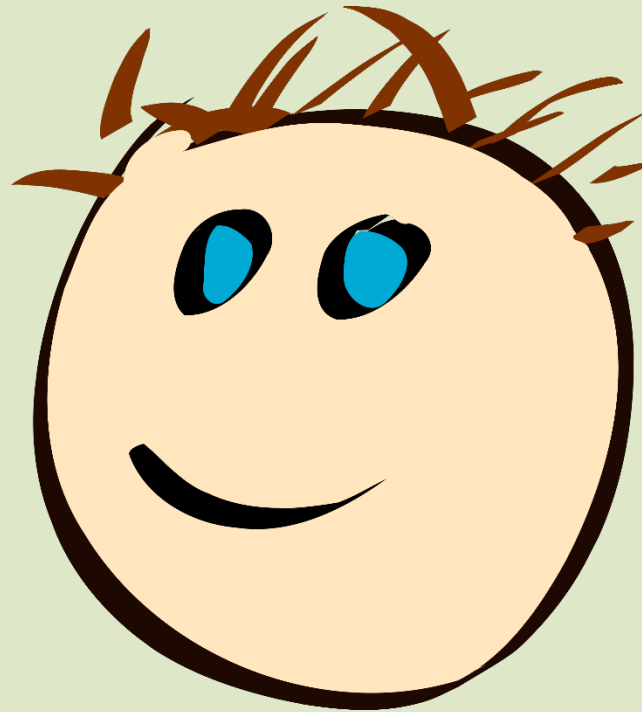
- Simple terms
- Information in one place
- Quickly view list to see relationships
- Can get super numbers geeky too!

For the Public Health Professional

- Foundational and broad perspective around community health
- Guidance for
 - Health Policy and Planning
 - Suggested data sets - epidemiology
 - Partnerships
 - Equity and culture issues



Inspiration from THT!



Organizational Integration of Health, Transportation and Safety

CLACKAMAS COUNTY

Health & Safety in All Policies

A Collaborative Framework & Review Process in Partnership with Clackamas County DTD and H3S to Implement Performance Clackamas

Policy Brief No. 1 | Fall 2015

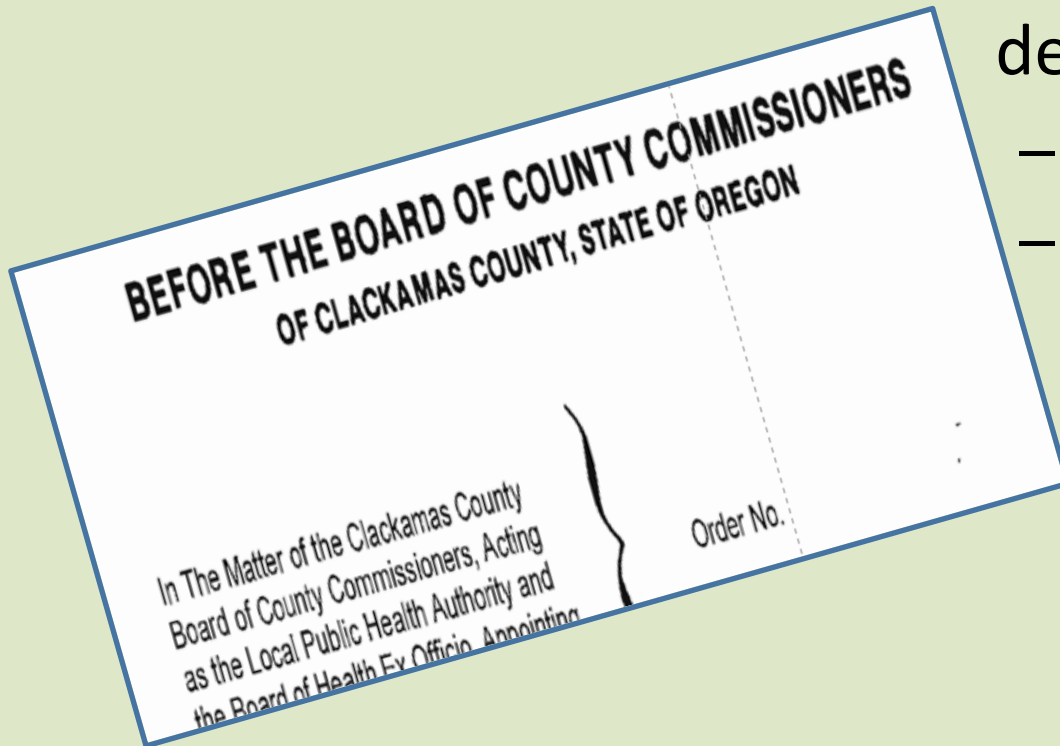
"All county employees play a role in ensuring safe, healthy & secure communities" —Performance Clackamas, 2014ⁱ

Summary of Recommendations
To develop a process in Clackamas County that:



Most Policy Decisions Have Health Impact

- County Commission decisions in 2014
 - 527 policy decisions
 - 78% - impact to health and safety



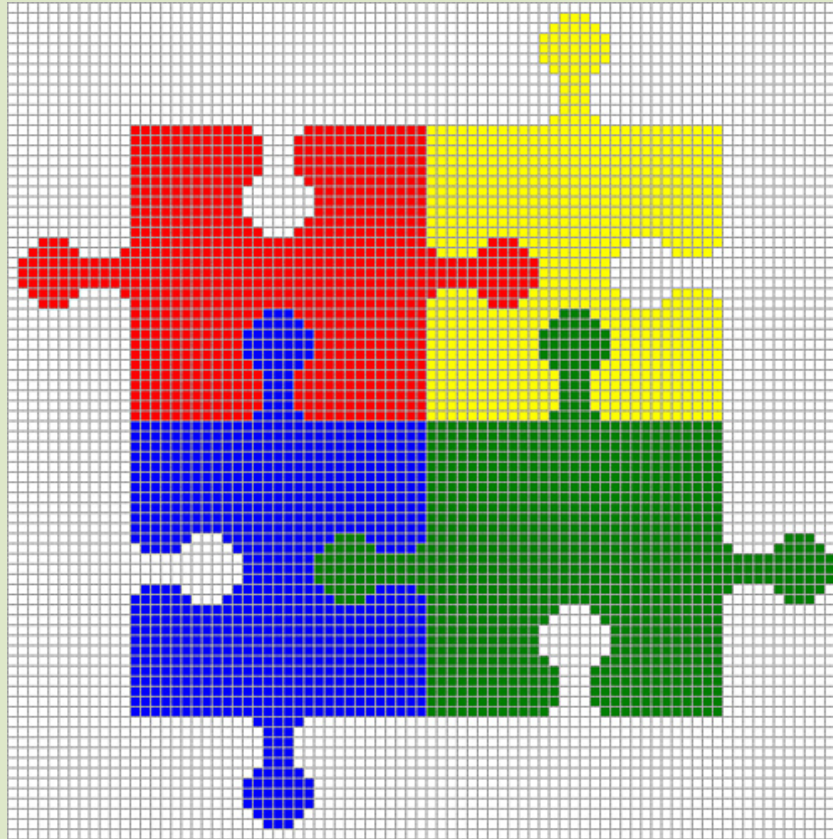
Health and Safety in All Policies

- Pilot project FY 2016/17
 - Select several policy proposals
 - Assess health and safety consequences of options within policy development process
 - Promote cross-sector collaboration and policy conversations





Many Puzzle Pieces!



Growing and Learning Together!

- Building relationships
- Opening minds
- Change our lens
- Creating positive impact
- Always considering how we can help our customers



SAFE and HEALTHY COMMUNITIES START WITH YOU!

Thank You

Questions?

Joseph Marek

JoeM@clackamas.us

503-742-4705

Philip Mason

PMason@Clackamas.us

503-742-5956

www.clackamas.us

